

Application Plugin Module (APM™)

Unique Sybase Features:

- "Hot" backup
- Supports multiple database servers operating on one machine
- Selectable database backup and restore operations
- Multiple backup modes
- Logs Sybase error messages
- Uses low-level backup API for maximum data throughput

NetVault Features:

- Uses native NetVault API for application integration
- Easy to use administration GUI for UNIX and Windows Platforms
- Point and click install of APM to servers or clients across networks
- Extensive media verification
- Threshold-triggered backup
- Allows pre and post processing scripts
- Supports raw devices and file systems
- Extensive low level error checking, logging and reporting
- TurboVault provides tunable shared main memory and block size for optimized performance
- Local or remote backup and recovery
- SAN LAN-free backup
- Duplication for off-site disaster recovery
- Dynamically Shared Devices (DSD™) allows library sharing across SANs or shared SCSI
- DirecSAN™ client transfer eliminates the backup server from the data path for maximum SAN performance
- Disk staging for increased performance across networks
- Supports as many data streams as there are devices
- Standard, non-proprietary tape formats, GPIO for UNIX and MTF for Windows

Sybase™ APM

Information is a growing and priceless asset for all organizations. Sybase environments are experiencing rapid growth as the importance of data and its uses has become a competitive edge for fast-growing companies. With the increasing size and number of Sybase applications comes the need for a reliable and easy to use solution that protects these important corporate assets.

Storage Management for Sybase Administrators

The Sybase Application Plugin Module (APM™) provides increased application availability via fast, online backup of Sybase databases in UNIX and Windows™ environments. The APM includes a wide variety of important features such as hot backup, support for multiple database servers on a single machine, advanced logging capabilities and a low-level backup Application Programming Interface (API) for maximized throughput.

Hot backup: With NetVault's Sybase APM, user databases remain online and fully accessible during backup operations, assuring zero downtime for users.

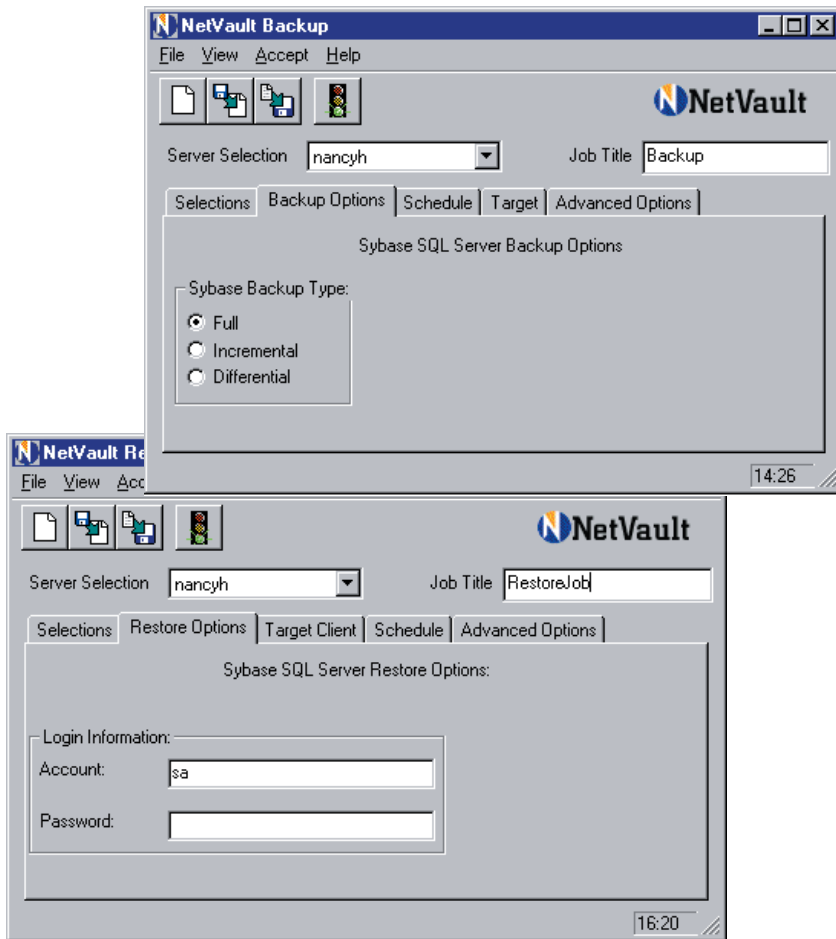
Supports multiple database servers operating on one machine: The Sybase APM displays all available servers. The APM allows backup or restore operations to be executed on all available Sybase servers.

Selectable database backup operations: Back up only what is needed with the Sybase APM. An easy to use, point and click user interface provides precise tuning of the backup and restore sets.

Multiple backup modes: The Sybase APM supports full, incremental and differential backup.

Logs Sybase error messages: Sybase records all messages to private log files. During backup and recovery operations, NetVault intercepts log messages related to the current job and sends a copy to the NetVault log so they can be displayed with other NetVault job messages.

Uses low-level backup API for maximum data throughput: The NetVault Sybase APM acts as a conduit between the proprietary backup API provided by Sybase and the core NetVault software. This enables data to be transferred directly between Sybase and NetVault without any operating system mechanism such as pipes or temporary files and results in higher data throughput as compared to conventional backup systems.



The NetVault Graphical User Interface (GUI) provides easy access to Sybase-specific backup and restore options:

NetVault

NetVault from BakBone Software, Inc., is a truly scalable, truly modular, high performance backup and recovery storage management solution. Available for UNIX, Linux, and Windows platforms, NetVault's unique architecture provides the flexibility for growth and continued enhancement as your information storage needs expand and change. NetVault supports SAN and NAS backups easily and effortlessly. An easy to use GUI delivers enterprise-wide control in distributed and centralized environments. NetVault is able to operate in multi-vendor networks and supports a broad range of servers, clients, databases, applications, storage media, and high performance devices.

About BakBone Software Corporation

BakBone Software is an international storage management software company that develops and globally distributes high-performance storage management solutions to the open systems markets. BakBone's near-line archive and backup/restore software suites provide scalable data protection from the workgroup to the enterprise. Founded in 2000, BakBone Software's products are used by companies worldwide, and are distributed through a network of OEMs, and solution providers.



System Requirements:

- Client / Server Platform: IBM AIX; HP-UX; Linux Kernel; MS Windows 2000, 2003, or NT 4.0; SGI IRIX; Solaris (SPARC); Tru64
- Backup Server Software: NetVault 6.5.0 or later
- Sybase Database Software: Sybase Adaptive Server Enterprise Software: Sybase ASE 11.9 or later
- Client only install requires license
- No additional third-party software required

Specifications and System Requirements subject to change without notice. For updated information, please visit www.bakbone.com/products

Corporate Headquarters

BakBone Software
10145 Pacific Heights Boulevard
Suite 500
San Diego, CA 92121
P: +1-858-450-9009
P: +1-866-484-2663
F: +1-858-450-9929
info@bakbone.com
www.bakbone.com

Pacific Rim Headquarters

BakBone Software K.K.
Shinjuku Dai-ichi Seimei Bldg, 11F
2-7-1 Nishi Shinjuku Shinjuku-ku
Tokyo 163-0711 Japan
P: +81-3-5908-3511
F: +81-3-5908-3512
info@bakbone.co.jp

European Headquarters

BakBone Software Ltd.
1210 Parkview
Arlington Business Park
Theale, Reading RG7 4TY
England
Phone: +44-870-351-8800
Fax: +44-870-351-8801
info@bakbone.co.uk

©2005 BakBone Software, the BakBone logo, APM, and NetVault are trademarks or registered trademarks of BakBone Software, Inc., in the United States and/or in other countries. All other names and trademarks are the property of their respective owners.