

## Application Plugin Module (APM™)

### Unique Informix Features:

- "Hot" backup
- Multiple backup modes
- Easy to use graphical user interface
- Point and click drill down to individual database spaces
- Multiple database servers operating on one machine

### NetVault Features:

- Uses native NetVault API for application integration
- Easy to use administration GUI for UNIX and NT
- Point and click install of APM to servers or clients across networks
- Extensive media verification
- Threshold-triggered backup
- Allows pre and post processing scripts
- Supports raw devices and file systems
- Extensive low level error checking, logging and reporting
- TurboVault provides tunable shared main memory and block size for optimized performance
- Local or remote backup and recovery
- SAN LAN-free backup
- Duplication for off-site disaster recovery
- Dynamically Shared Drives (DSD™) allows library sharing across SANs or shared SCSI
- SmartClient™ client transfer eliminates the backup server from the data path for maximum SAN performance
- Disk staging for increased performance across networks
- Supports as many data streams as there are devices

## Informix™ APM

Information is a growing and priceless asset for all organizations. Informix environments are experiencing dramatic growth as the importance of data and its uses has become a competitive edge for fast-growing organizations. With the increasing size and number of Informix databases comes the need for a reliable and easy to use solution to protect those assets. A database-specific backup and restoration solution is critical for keeping user data protected.

### Storage Management for Informix Administrators

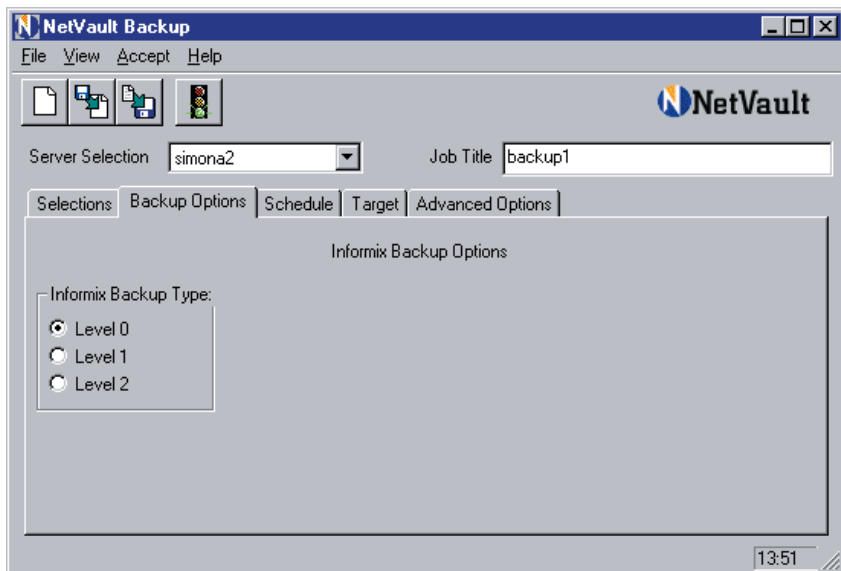
The Informix Application Plugin Module (APM) provides increased application availability via fast, online backup of Informix databases in UNIX and Windows™ NT environments. The APM includes a wide variety of important features such as hot backup, support for multiple database servers on a single machine, a variety of backup operations and selectable backup options.

**Hot backup:** With NetVault's Informix APM, user databases remain online and fully accessible during backup operations, assuring zero downtime for users.

**Selectable database backup operations:** Back up only what is needed with the NetVault Informix APM. An easy to use, point and click Informix-specific user interface provides precise tuning of the backup and restore sets down to the individual DB spaces.

**Multiple backup modes:** The Informix APM supports full backup and two forms of incremental backup.

**Multiple database servers operating on one machine:** The Informix APM allows backup operations to be applied to any available Informix server.



The NetVault Graphical User Interface (GUI) provides easy access to Informix-specific backup options:

### System Requirements:

- IBM AIX; HP-UX; Linux Kernel; MS Windows 2000, 2003, or NT 4.0; SCO OpenServer 5, SCO UnixWare 7; SGI IRIX; Solaris (Intel); Solaris (SPARC); Tru64
- Backup Server Software: NetVault 6.5.0 or later
- Informix Database Software: Informix Dynamic Server 7.31 or later.
- Client only install requires license
- No additional third-party software required

Specifications and System Requirements subject to change without notice. For updated information, please visit [www.bakbone.com/products](http://www.bakbone.com/products)

## NetVault

NetVault from BakBone Software, Inc., is a truly scalable, truly modular, high performance backup and recovery storage management solution. Available for UNIX, Linux, NT, and Windows 2000 NetVault's unique architecture provides the flexibility for growth and continued enhancement as your information storage needs expand and change. NetVault supports SAN and NAS backups easily and effortlessly. An easy to use GUI delivers enterprise-wide control in distributed and centralized environments. NetVault is able to operate in multi-vendor networks and supports a broad range of servers, clients, databases, applications, storage media, and high performance devices.

## About BakBone Software Corporation

BakBone Software is an international storage management software company that develops and globally distributes high-performance storage management solutions to the open systems markets. BakBone's near-line archive and backup/restore software suites provide scalable data protection from the workgroup to the enterprise. Founded in 2000, BakBone Software's products are used by companies worldwide, and are distributed through a network of OEMs, and solution providers.

### Corporate Headquarters

BakBone Software  
10145 Pacific Heights Boulevard  
Suite 500  
San Diego, CA 92121  
+P: 1-858-450-9009  
+P: 1-866-484-2663  
+F: 1-858-450-9929  
info@bakbone.com  
www.bakbone.com

### Pacific Rim Headquarters

BakBone Software K.K.  
Shinjuku Dai-ichi Seimei Bldg. 11F  
2-7-1 Nishi Shinjuku Shinjuku-ku  
Tokyo 163-0711 Japan  
P: +81-3-5908-3511  
F: +81-3-5908-3512  
info@bakbone.co.jp

### European Headquarters

BakBone Software Ltd.  
1210 Parkview  
Arlington Business Park  
Theale, Reading RG7 4TY  
England  
Phone: +44-870-351-8800  
Fax: +44-870-351-8801  
info@bakbone.co.uk

©2005 BakBone Software, the BakBone logo, APM, and NetVault are trademarks or registered trademarks of BakBone Software, Inc., in the United States and/or in other countries. All other names and trademarks are the property of their respective owners.

